



LIBERTY.



LIBERTY.





COLOUR AND PRINT IN TIMELESS COMBINATIONS

In an exciting union of two iconic British brands, richly pigmented Farrow & Ball paints meet complementary Liberty Interiors Fabrics, creating hand-picked combinations of colour and print for a new generation of homes.

This original edit features 15 shades from the Farrow & Ball Archive and their complementary interiors fabrics from the Liberty Modern Collector range. Curated by Farrow & Ball and Liberty experts, they create a timeless series that pays homage to each brand's archive.

Curated by

LIBERTY.



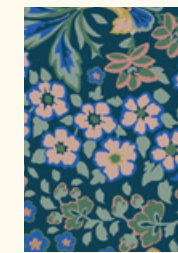
Clunch®
No.2009



Persian Voyage
Jade Stone



Archive®
No.227



Marquess Garden
Lichen Rose



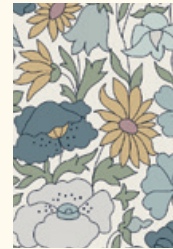
Smoked Trout®
No.60



Persian Voyage
Pewter



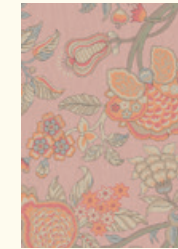
Potted Shrimp™
No.9906



Poppy Meadowfield
Lichen



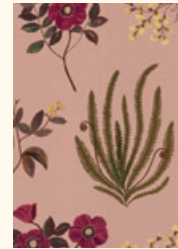
Fruit Fool™
No.9911



Palampore Trail
Lacquer



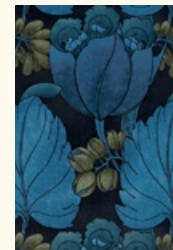
Cola™
No.9918



Botanical Flora
Lacquer



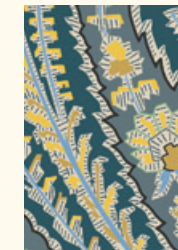
Serge™
No.9919



Regency Tulip
Lapis



Sloe Blue™
No.87



Felix Raison
Lichen Bright



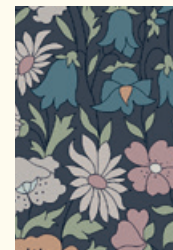
Berrington Blue®
No.14



Palampore Trail
Lichen



Olive™
No.13



Poppy Meadowfield
Pewter Blue



Suffield Green™
No.77



Wiltshire Blossom
Lichen



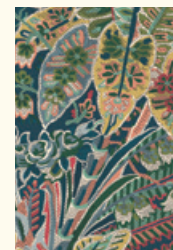
Chine Green™
No.35



Zennor Arbour
Plaster Pink



Cane™
No.53



Persian Voyage
Lichen



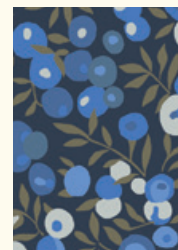
Chemise™
No.216



Hera Plume
Pewter



Pantalon™
No.221



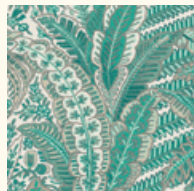
Wiltshire Blossom
Lapis Dark

CLUNCH No.2009 WITH PERSIAN VOYAGE, JADE STONE

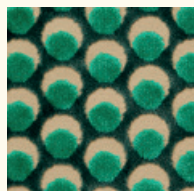
A laid-back shade, Clunch offers a clean and neutral backdrop that allows the intricacy and jewel-like colours of Persian Voyage to really shine.



Clunch No.2009
Modern Eggshell



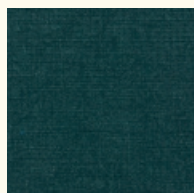
Persian Voyage
Jade Stone



Ottoman Spot
Jade



Lustre Linen
Jade



Emberton Linen
Acacia



**SMOKED TROUT No.60 WITH
PERSIAN VOYAGE, PEWTER**

The rich mushroom tones of Smoked Trout work beautifully with the Pewter colourway of Persian Voyage, subtly mirroring the warmer undertones in the pattern.



Smoked Trout No.60
ModernEmulsion



Persian Voyage
Pewter



**POTTED SHRIMP No.9906 WITH
POPPY MEADOWFIELD, PEWTER**

Potted Shrimp is a sweet, soft colour with a surprising complexity that brings out the nostalgic nature of Poppy Meadowfield.



Potted Shrimp No.9906
Modern Eggshell



Clunch No.2009
Modern Emulsion



Poppy Meadowfield
Lichen



FRUIT FOOL No.9911 WITH PALAMPORE TRAIL, LACQUER

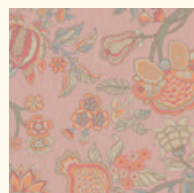
Fruit Fool's underlying blue tones give it a slight edge, making it a perfect partner for the darker coral shades in Palampore Trail.



Fruit Fool No.9911
Modern Eggshell



Clunch No.2009
Modern Emulsion



Palampore Trail
Lacquer



Emberton Linen
Robin's Egg



**COLA No.9918 WITH
BOTANICAL FLORA, LACQUER**

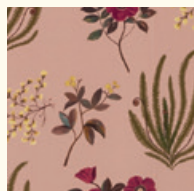
The richness and depth of Cola call out to the darkest tones in Botanical Flora, giving the overall look a contemporary feel with enormous impact.



Cola No.9918
Modern Emulsion



Cane No.53
Modern Emulsion



Botanical Flora
Lacquer



Cotton Velvet
Fennel

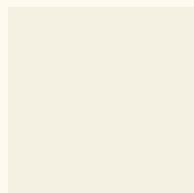


**SERGE No.9919 WITH
REGENCY TULIP, LAPIS**

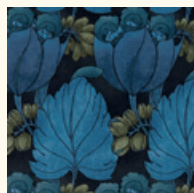
Classic navy Serge is the perfect medium between the rich, dark ground colour of Regency Tulip and its bold blue botanical print.



Serge No.9919
Modern Emulsion
Modern Eggshell



Wimborne White No.239
Modern Emulsion
Modern Eggshell



Regency Tulip
Lapis



Emberton Linen
Starling



**SLOE BLUE No.87 WITH
FELIX RAISON, LICHEN BRIGHT**

Sloe Blue feels both classic and fresh when paired with a paisley print like Felix Raison, especially in perennial shades like blue and yellow.



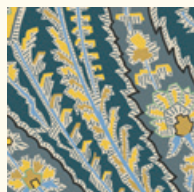
Sloe Blue No.87
Modern Eggshell



Pantalon No.221
Modern Eggshell



Clunch No.2009
Modern Emulsion



Felix Raison
Lichen Bright



Lustre Linen
Fennel

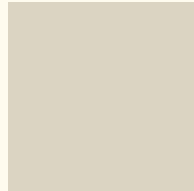


**BERRINGTON BLUE No.14 WITH
PALAMPORE TRAIL, LICHEN**

Elegant Berrington Blue is ever so slightly darker than the blue of Palampore Trail, creating a look that's both dynamic and calming.



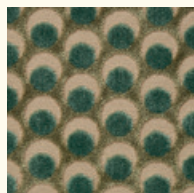
Berrington Blue No.14
Modern Emulsion



Clunch No.2009
Modern Eggshell



Palampore Trail
Lichen



Ottoman Spot
Lichen



**OLIVE No.13 WITH
POPPY MEADOWFIELD, PEWTER BLUE**

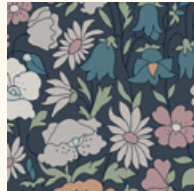
Olive is a rich colour that works brilliantly with a mid-century modern look, especially when accented with retro-cool Poppy Meadowfield.



Olive No.13
Modern Emulsion



Clunch No.2009
Modern Eggshell



Poppy Meadowfield
Pewter Blue



Wiltshire Blossom
Sloe



SUFFIELD GREEN No.77 WITH WILTSHIRE BLOSSOM, LICHEN

Suffield Green mirrors the subtle hint of greenery in Wiltshire Blossom rather than its more forthcoming flowers, making for an unexpected yet effortless look.



Suffield Green No.77
Modern Emulsion



Clunch No.2009
Modern Eggshell



Wiltshire Blossom
Lichen

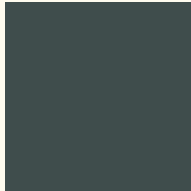


Emberton Linen
Ointment

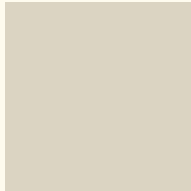


**CHINE GREEN No.35 WITH
ZENNOR ARBOUR, PLASTER PINK**

With the intensely deep Chine Green on walls, the delicate tones and fine details of Zennor Arbour create lightness and balance.



Chine Green No.35
Modern Emulsion



Clunch No.2009
Modern Emulsion
Modern Eggshell



Zennor Arbour
Plaster Pink



**CHEMISE No.216 WITH
HERA PLUME, PEWTER**

The strength and simplicity of Chemise are perfectly complemented by Hera Plume in Pewter, with its soft and elegant tone-on-tone print.



Chemise No.216
Modern Emulsion



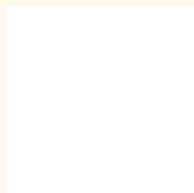
Suffield Green No.77
Modern Emulsion



Smoked Trout No.60
Modern Emulsion
Modern Eggshell



Hera Plume
Pewter



Persian Voyage
Pewter





Curated by

LIBERTY.

Media Enquiries:

Camron PR – farrowandball@camronpr.com

Kate Sangervasi

T: +1 917.675.4369

E: kate.sangervasi@camronpr.com